

# **Haymarket Project: New 230kV Line and Substation**

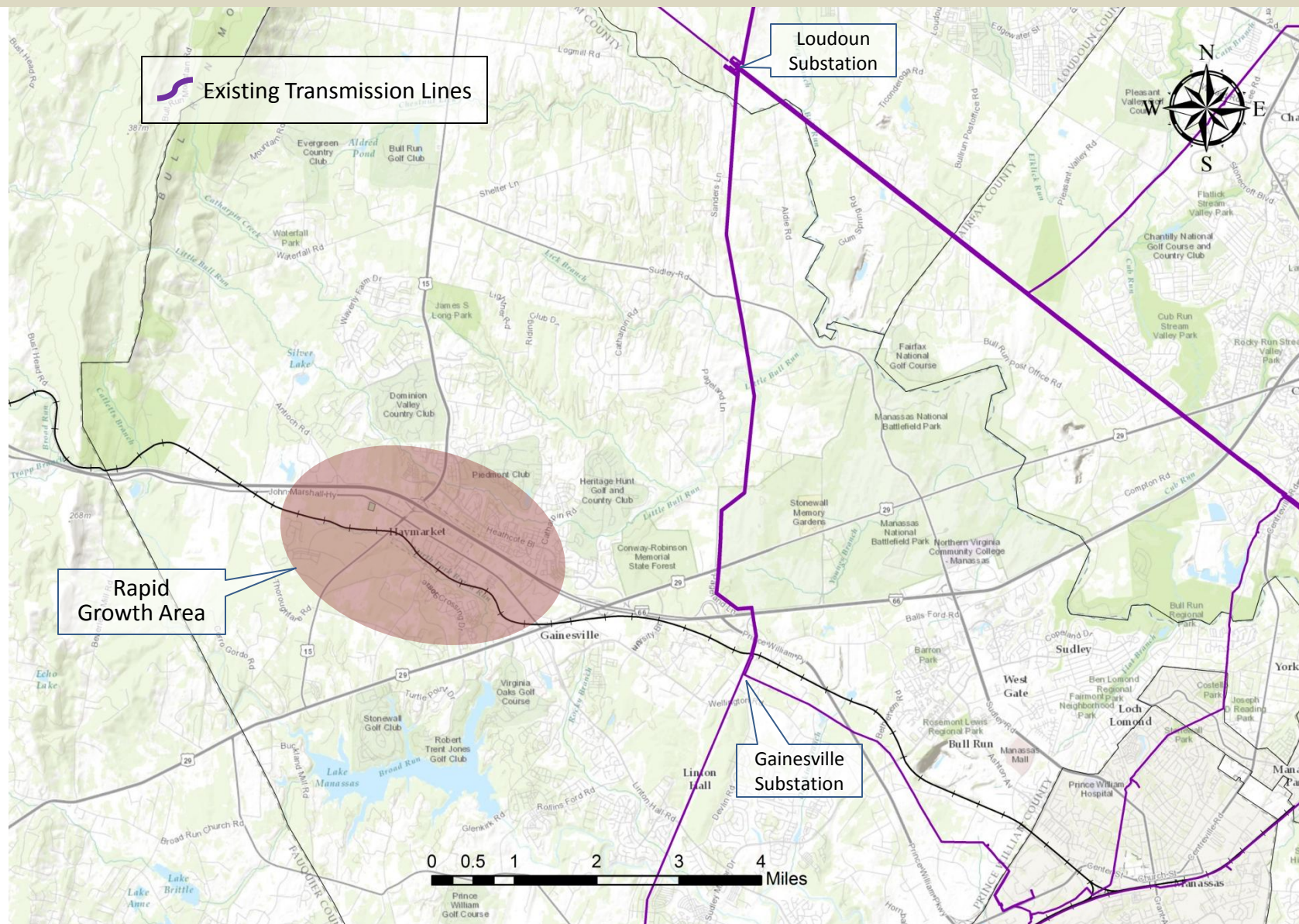
**August 2014**

# Our Energy Challenge in the Haymarket Area

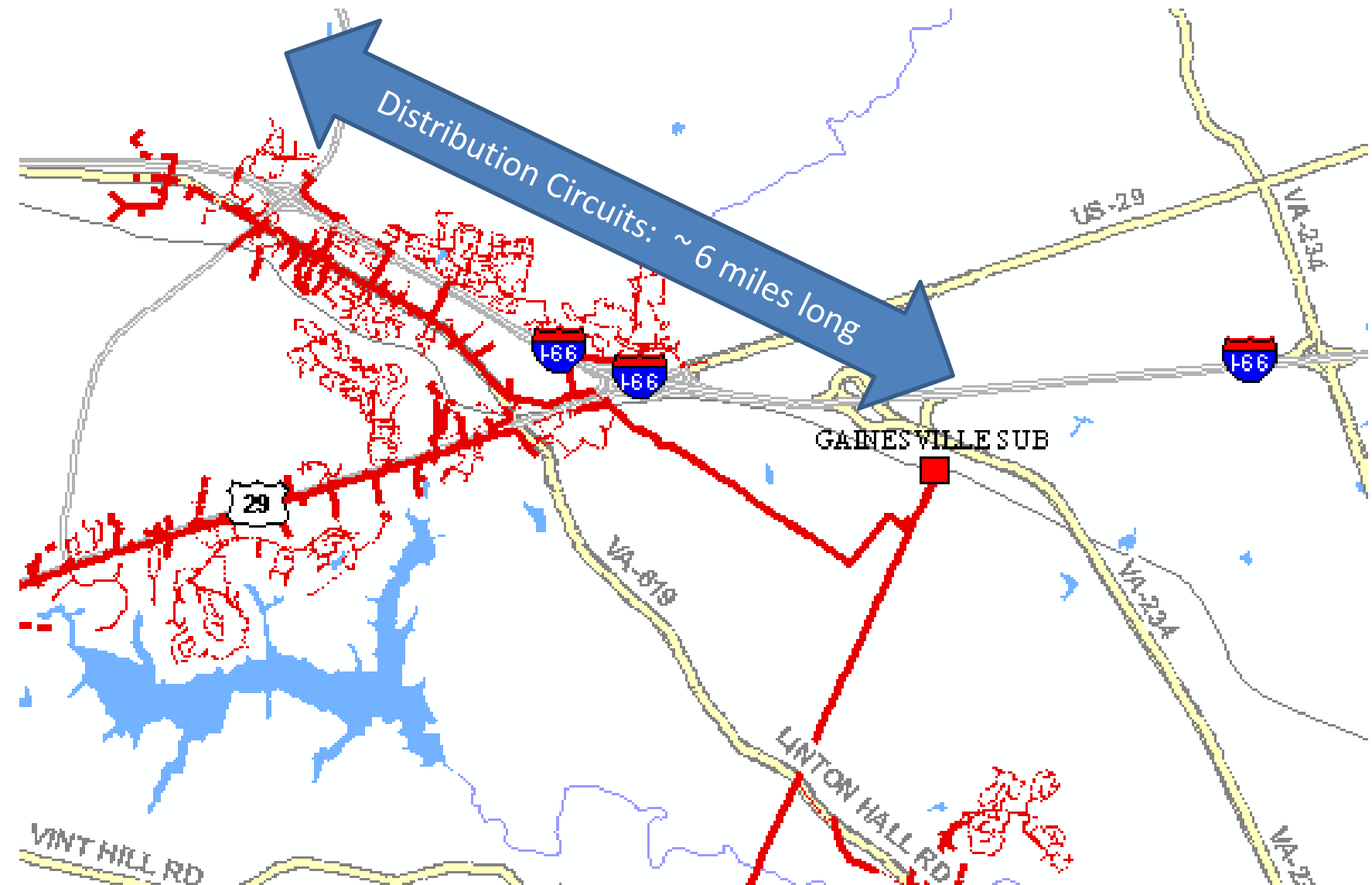
- ❑ Haymarket's population has more than doubled since 2000
- ❑ During this same time, demand for electricity has roughly **tripled**
- ❑ Commercial and industrial growth keeping pace with thriving area
  - Local business expansion plans create the immediate need for a transmission solution, beginning in 2017



# The Existing Transmission Grid



# Haymarket: served by long distribution lines today



# Haymarket Project

## Improved Reliability and Capacity for the Future

### Two Phased Solution:

- ❑ Short term: Distribution reinforcements will provide “bridging power” until a new transmission line can be built and energized to serve Haymarket
- ❑ Long term: Transmission Solution
  - Locate new substation near load center
  - Extend new double-circuit 230 kV transmission line along ~6 miles of new right-of-way
  - New lines must be energized by 2017, when local loads are expected to exceed 100 MW
  - New facilities will help maintain local reliability and provide future capacity for NOVEC to also have a new, local source of power
- ❑ Estimated Total Cost: \$65M



# Phase 1: Distribution Reinforcements



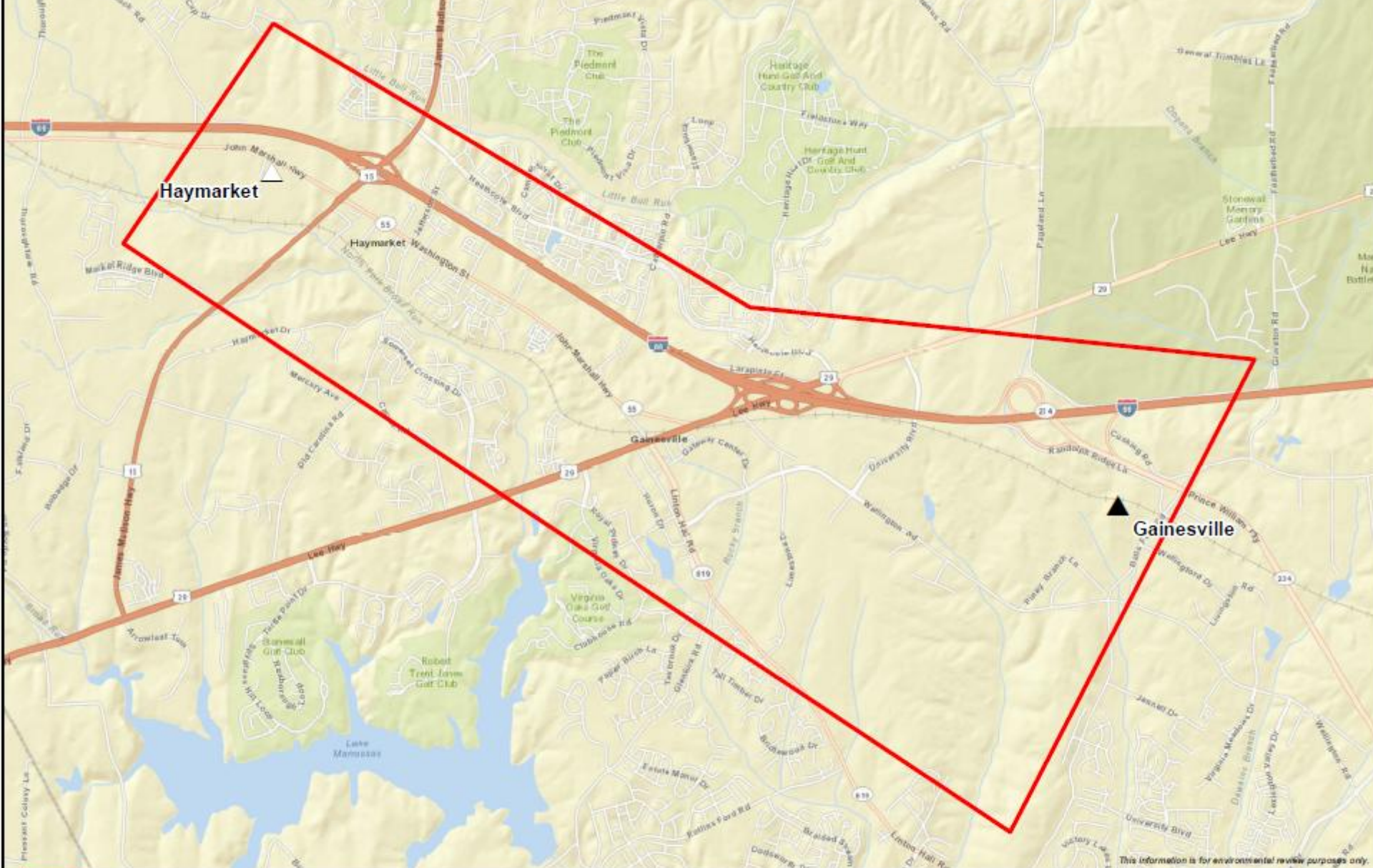
**Viewpoint 10** - Intersection of Washington Street and Coach Way - *Existing View*

# Phase 1: Distribution Reinforcements - *AFTER*



**Viewpoint 10** - Intersection of Washington Street and Coach Way - *Proposed View*





This information is for environmental review purposes only.



Study Area

—+— Railroad

△ Proposed Substation

▲ Existing Substation

1:48,000

0 2,000 4,000 Feet

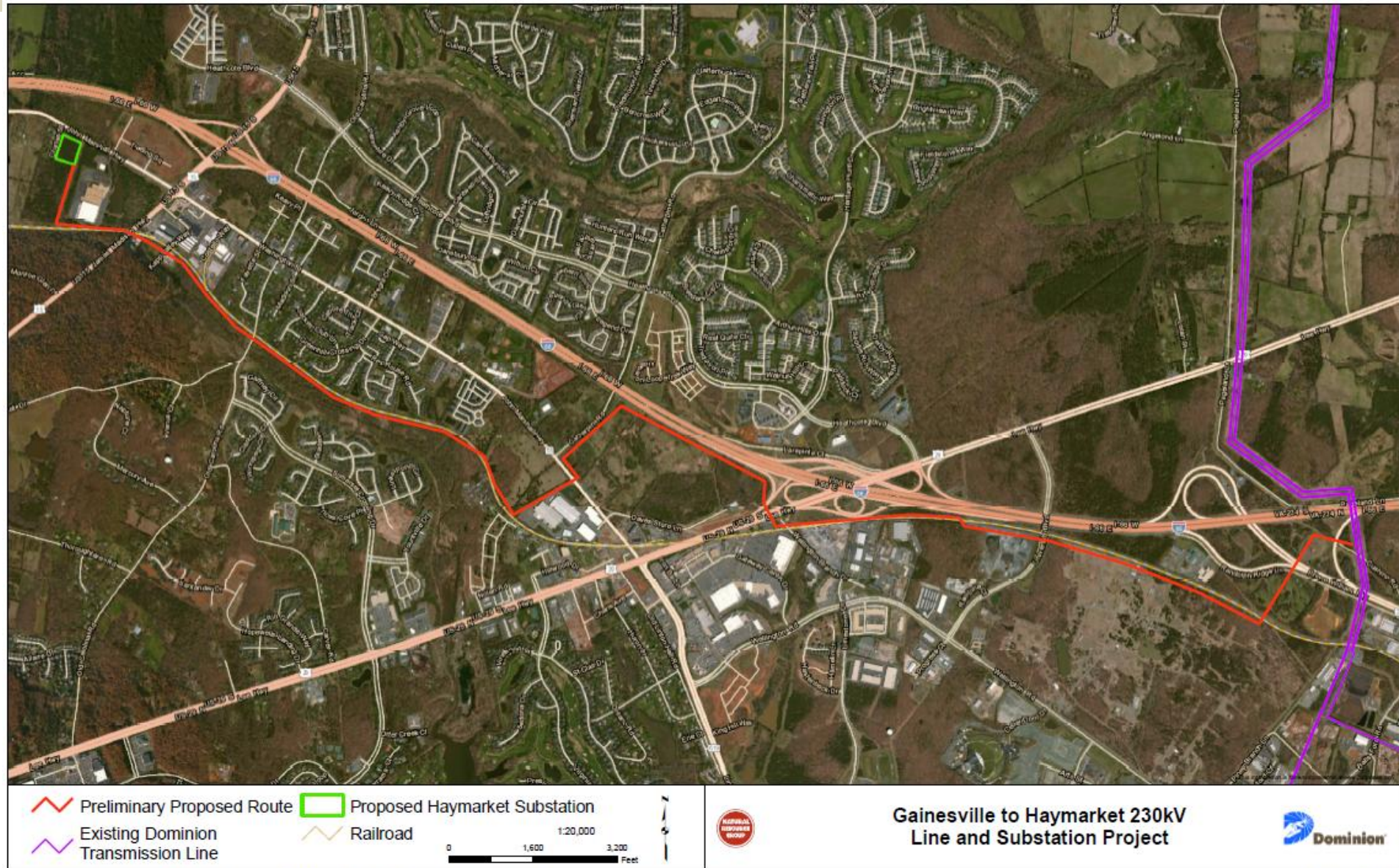


## Gainesville to Haymarket Study Area





# Preliminary Route for Community Feedback





# Line Route South of Greenhill Crossing



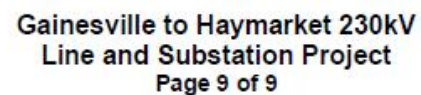
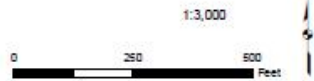


# Line Route Crossing Jefferson Street



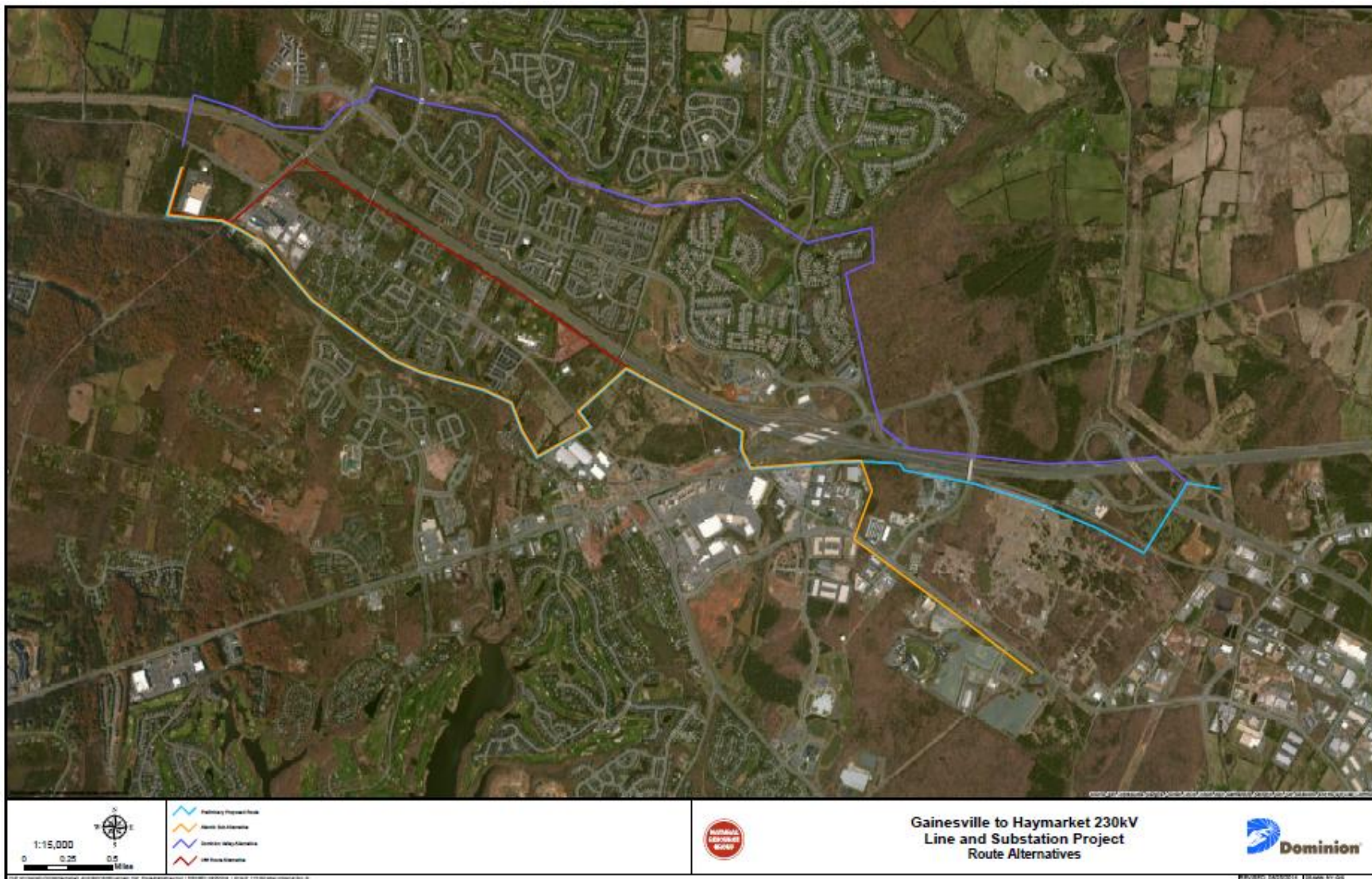


This aerial map shows the Northlake Business District. A large industrial building with a white roof and a parking lot are visible. A pond is located to the right of the building. A road intersection is shown in the upper right. The proposed Northlake Station area is outlined in red, and the surrounding area is outlined in green.





# Alternatives Considered





# Possible Structure Type



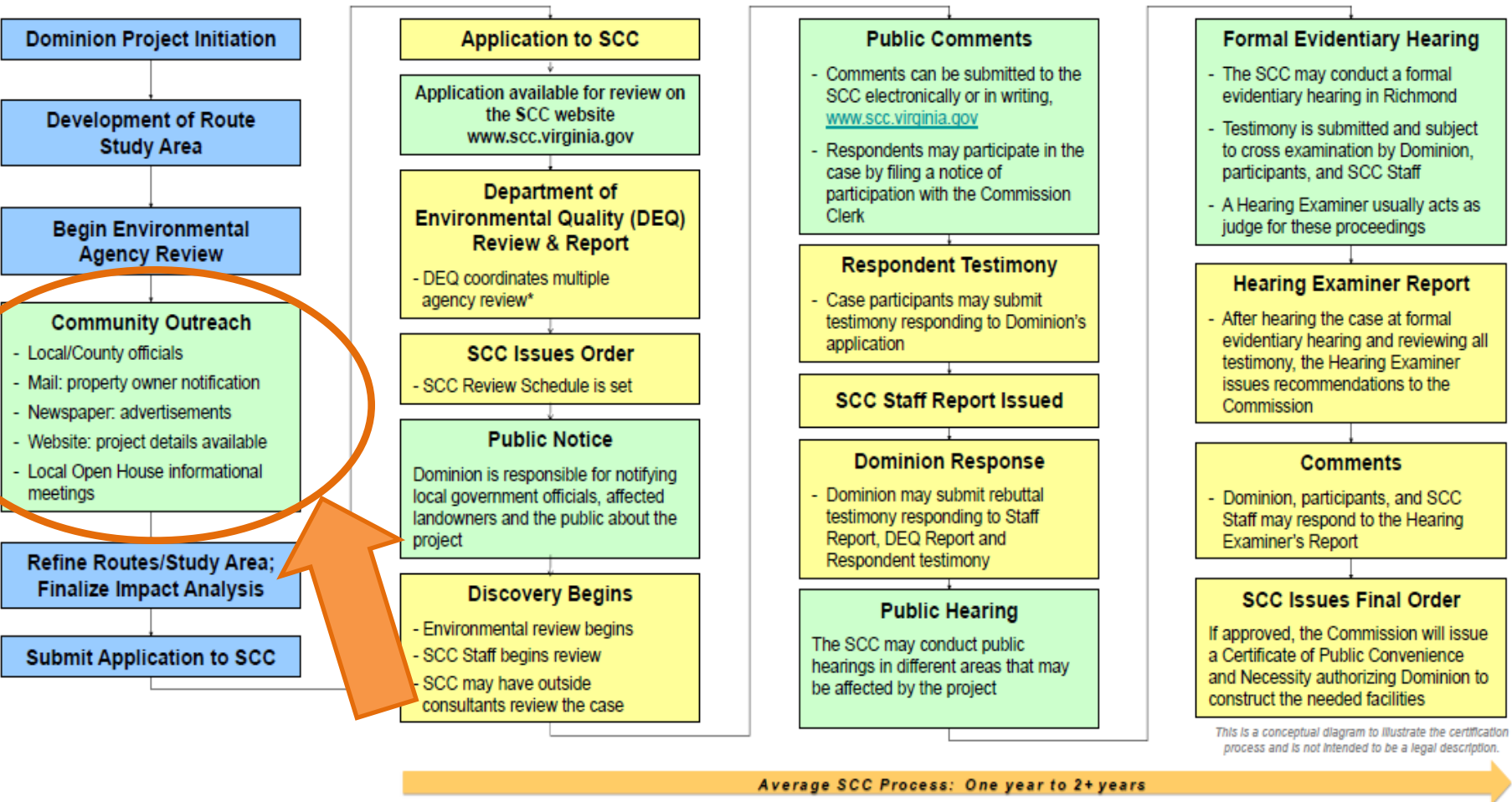


# Target Schedule

June-July	<ul style="list-style-type: none"><li>• Brief local elected officials</li></ul>
<b>June-Oct 2014</b>	<ul style="list-style-type: none"><li>• <b>Community Outreach</b></li></ul>
August 25	<ul style="list-style-type: none"><li>• Town Council Work Session, Haymarket Town Hall</li></ul>
September 8	<ul style="list-style-type: none"><li>• Planning Commission Meeting, Haymarket Town Hall</li></ul>
September 10	<ul style="list-style-type: none"><li>• Open House: Battlefield High School, 5:00 – 7:30 p.m.</li></ul>
Fall 2014	<ul style="list-style-type: none"><li>• Submit application to SCC</li></ul>
Late Fall 2014	<ul style="list-style-type: none"><li>• Begin Distribution work to reinforce existing facilities</li></ul>
2015	<ul style="list-style-type: none"><li>• Substation plans submitted to Prince William County for local approval</li></ul>
Early 2016	<ul style="list-style-type: none"><li>• With necessary approvals, begin construction</li></ul>
Spring 2017	<ul style="list-style-type: none"><li>• Energize new transmission line and station</li></ul>

# The Transmission Line Approval Process

Virginia's State Corporation Commission (SCC) has regulatory authority over all electric utilities and requires that all transmission facilities at or above 138 kV be certified by the SCC. The SCC determines the need for a proposed line and the route. Among other elements considered, the SCC must determine that the selected route reasonably minimizes the impact on scenic assets, historic districts, and the environment.



\*DEQ coordinated agency review includes: Virginia Marine Resources Commission, Department of Conservation & Recreation, Department of Game & Inland Fisheries, Department of Historic Resources and others.